

# AQUAFIBER



## FEATURES

High absorbency // Excellent wet and dry strength // Easy to use // Reduced lateral wicking // Clear gelling // Promotes healing through a moist wound environment



# ACTIVHEAL AQUAFIBER® IS A SOFT, CONFORMABLE, HIGHLY ABSORBENT DRESSING THAT CONVERTS TO A SOFT CLEAR GEL WHEN IN CONTACT WITH WOUND EXUDATE.

The super absorbent fibre contained in ActivHeal Aquafiber® gels on contact with wound fluid and gently conforms to the wound surface. ActivHeal Aquafiber® is designed to remain intact when wet or dry<sup>1</sup> making it easy and atraumatic when removing from the wound.

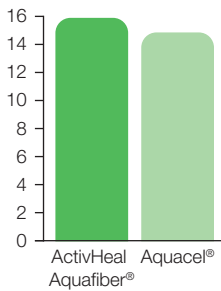
ActivHeal Aquafiber® contains calcium ions that exchange with sodium ions found in wound fluid. Calcium is known to be beneficial in several stages of the wound healing process<sup>2</sup>.

## PERFORMANCE

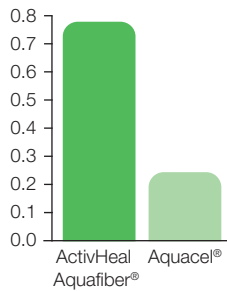
The speed of absorption and the behaviour of the dressing ensure that the fluid is absorbed vertically into the dressing. The fluid absorption and dressing characteristics reduce the risk of wound maceration, protecting the healthy surrounding skin from breakdown.

The natural make up of the ActivHeal Aquafiber® also allows the dressing to be used as a haemostat to control minor bleeding<sup>3</sup>.

### Absorbency (g/10cm<sup>2</sup>)<sup>4</sup>



### Tensile wet strength (N/cm)<sup>4</sup>



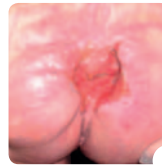
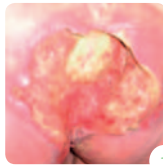
## INDICATIONS

ActivHeal Aquafiber® is indicated for moderately to heavily exuding chronic and acute wounds and to control minor bleeding in superficial wounds.

- Pressure ulcers
- Leg ulcers
- Lacerations
- Abrasions
- Graft wounds
- Venous ulcers
- Arterial ulcers
- Donor sites
- Post operative surgical wounds
- Diabetic ulcers
- Cavity wounds
- Trauma wounds
- Superficial and partial thickness burns

## CASE STUDY

Miss LB is a 46 year old woman admitted following a collapse at home. The patient has a history of spina bifida, is a non insulin dependent diabetic and had an ankle injury 6 weeks prior to her admission.



### WEEK 1

The wound was covered by 100% necrotic tissue, with offensive exudate and a pseudomonas infection was present. Following the initial assessment by the medics the surgeons surgically excised the wound down to viable tissue.

### WEEK 3

The wound showed progression with a significant reduction in the cavity size, removal of slough and promotion of granulation with the application of ActivHeal Aquafiber®.

### WEEK 5

The wound had reduced in size and depth and as a result the patient expressed that the dressing was comfortable and caused no pain on removal.

## SIZES AND CODES

ActivHeal Aquafiber® is available through a variety of channels including NHS Supply Chain and the Drug Tariff.

### ActivHeal Aquafiber®

SIZE (CM)	DRESSINGS PER CARTON	PRODUCT CODE	NHS SUPPLY CHAIN	DT PIP CODE
5x5	10	10009145	ELY202	333-0701
10x10	10	10009146	ELY203	333-0719
15x15	5	10009147	ELY204	333-0743
2x42	5	10009148	ELY205	333-0750

### References

1. AMS data on file.
2. Lansdown, A. (2006) Bioactive Dressings: old ideas, new technology. British Journal of Nursing. Tissue Viability supplement, Vol16, no13.
3. Seymour, J (1997) Alginate dressings in wound management, Nursing Times Oct 29: VOL 93, No.44.
4. SMTL independent data 07/2348/3.