



activheal

**WOUND CARE
BECAUSE YOU CARE**



**HIGHLY
ABSORBENT**

**HIGH WET
STRENGTH**

**LOW RISK OF
MACERATION**

**LOW LATERAL
WICKING**

AQUAFIBER

**WOUND CARE
BECAUSE YOU CARE**

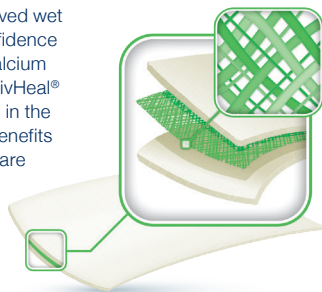
FEATURES

High absorbency // Excellent wet and dry strength // Easy to use // Reduced lateral wicking // Clear gelling // Promotes healing through a moist wound environment

ACTIVHEAL® AQUAFIBER IS A SOFT, CONFORMABLE, HIGHLY ABSORBENT DRESSING THAT CONVERTS TO A SOFT CLEAR GEL WHEN IN CONTACT WITH WOUND EXUDATE.

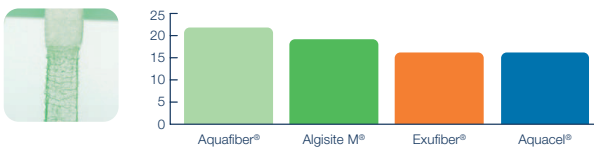
ActivHeal® Aquafiber gels on contact with wound exudate and gently conforms to the wound surface. Designed to remain intact when wet or dry, the dressing gives all the benefits of an alginate, while ensuring a moist wound environment is maintained.

The reinforcement gives the dressing improved wet integrity providing the clinician with the confidence that the dressing can be removed intact. Calcium ions present within the alginate fibres of ActivHeal® Aquafiber exchange with sodium ions found in the wound exudate. The donation of calcium benefits the wound by stimulating cytokines which are essential to the wound healing process.² Exudate is absorbed vertically into ActivHeal® Aquafiber reducing the risk of maceration and damage to the peri wound skin.³

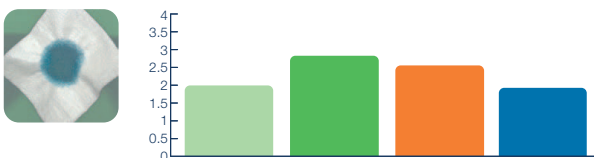


PERFORMANCE¹

Absorbency g/100cm²



Strength N/cm



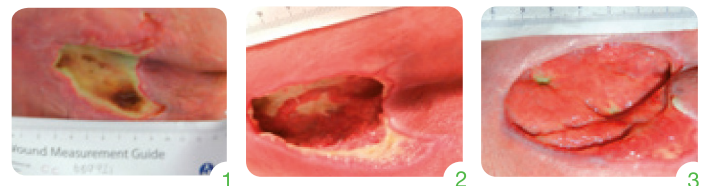
SIZES AND CODES

ActivHeal® Aquafiber is available through a variety of channels including NHS Supply Chain and the Drug Tariff.

SIZE (CM)	DRESSINGS PER CARTON	PRODUCT CODE	NHS SUPPLY CHAIN	DT PIP CODE
5x5	10	10009145	ELY202	333-0701
10x10	10	10009146	ELY203	333-0719
15x15	5	10009147	ELY204	333-0743
2x42	5	10009148	ELY205	333-0750

CASE STUDY

Patient B, a 93 year old man presented with a Grade 3 Pressure Ulcer with suspected deep tissue injury on the sacral area. He had a history of TIA's and has a pacemaker following periods of atrial ectopic with ventricular blocks. ActivHeal® Aquafiber ribbon was applied four weeks into the treatment regime.



- WEEK 1** - The wound was covered with 10% granulating tissue, 20% slough and 70% soft necrotic tissue. There was still erythema to the surrounding skin and excoriation. The exudate levels were low to medium.
- WEEK 3** - All necrotic tissue had been removed, the wound now presented as a cavity. Areas of epithelialisation at the wound edges were now present along with 70% of granulation tissue and 30% slough.
- WEEK 5** - The wound progressed to 5% slough and 95% granulation tissue. There were areas of epithelial tissue. One area of undermining to the proximal area of the wound had healed and only 1cm area of undermining to the distal part of the wound.

INDICATIONS

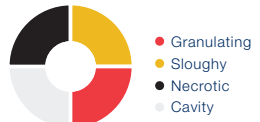
ActivHeal® Aquafiber is indicated for moderately to heavily exuding chronic and acute wounds and can act as a haemostat to control minor bleeding in superficial wounds.²

- Pressure ulcers
- Leg ulcers
- Lacerations
- Abrasions
- Graft wounds
- Venous ulcers
- Arterial ulcers
- Donor sites
- Post operative surgical wounds
- Diabetic ulcers
- Cavity wounds
- Trauma wounds
- Superficial and partial thickness burns

Moderate > Heavy Exudate



Wound Types



Advanced Medical Solutions Ltd

Premier Park, 33 Road One, Winsford Industrial Estate, Winsford, Cheshire CW7 3RT
T 08444 125 755 **E** activheal@admedsol.com **W** www.activheal.com



References 1. AMS data on file LD093-15, LD085-15, P1018R. 2. Lansdown, A. (2006) Bioactive Dressings: old ideas, new technology, British Journal of Nursing, Tissue Viability supplement, Vol16, no13. 3. Seymour, J (1997) Alginate dressings in wound management, Nursing Times Oct 29: VOL 93, No.44. 4. SMTL independent data 07/2348/3. ActivHeal® is a registered trademark of Advanced Medical Solutions, Algisite M and Exufiber are registered trademarks of Smith & Nephew, Aquacel is a registered trademark of ConvaTec.